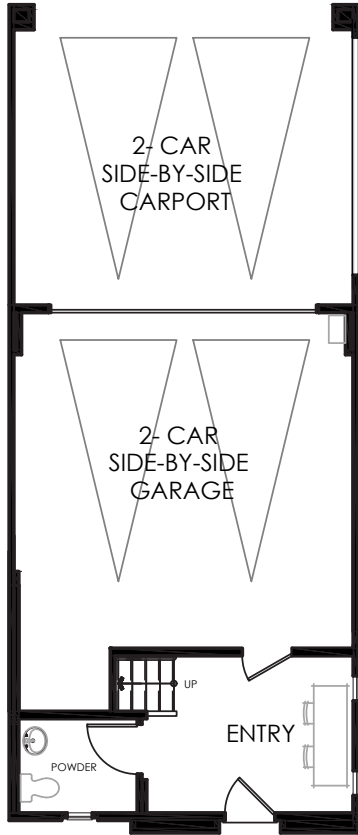
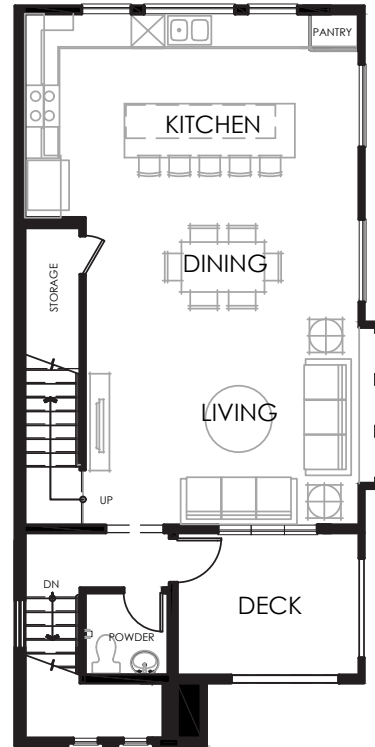


PLAN 3X, The Lido

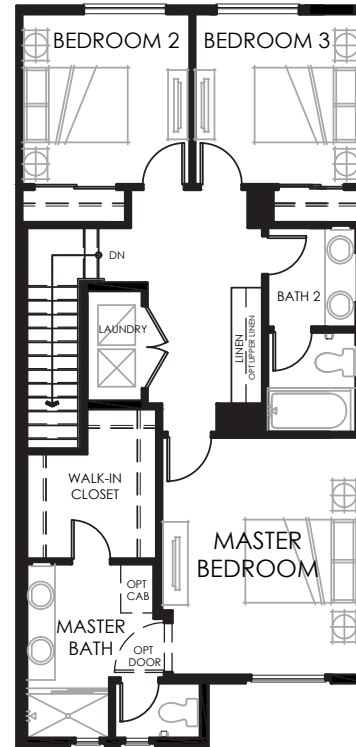
3 Beds, 2 Full Baths + 2 Powders
Optional 3rd floor dual master suite
2-Car Side-by-Side Garage + Carport
1,816 Sq Ft



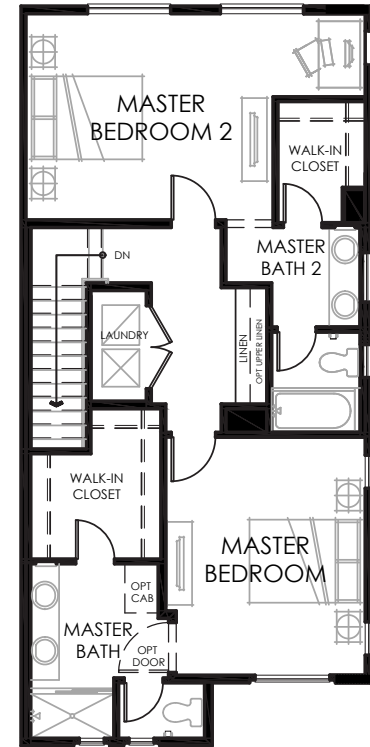
1ST FLOOR



2ND FLOOR



3RD FLOOR



3RD FLOOR

OPTION

Westside Walk by The Olson Company | 390 Ford Road, Costa Mesa, CA 92627 | (562) 370-9504 | kgorske@theolsonco.com | WestsideWalk.com

Floorplans and renderings are artist's conception based on preliminary information. Some homesites may be pre-plotted for specific variations or options. Please consult your Home Advisor for details. In an effort to improve our homes, Olson Homes reserves the right to change features, prices or plans without notice. Windows, doors, porches, patios and decks vary per elevation and per homesite location. Floorplan measurements are approximate. Prices and availability are subject to change without notice. BRE #01877641. CSLB #939166 Olson Urban Housing, L.P.

